



Madison, Wisconsin

INDEX OF SHEETS

| | |
|--------------|-------------------------|
| SHEET NO. U1 | UTILITY PLAN & PROFILES |
| SHEET NO. U2 | SEWER SCHEDULE |

CITY OF MADISON

CITY ENGINEERING DIVISION

DEPARTMENT OF PUBLIC WORKS

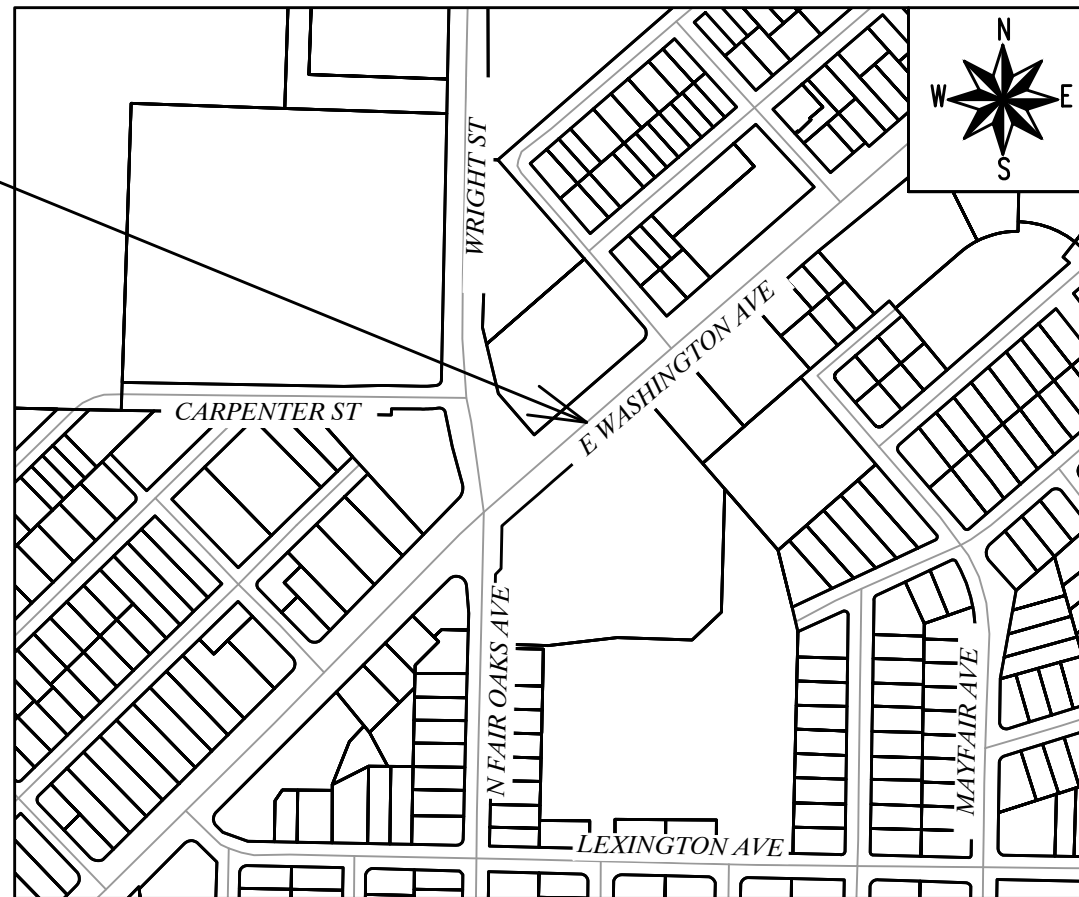
PLAN OF PROPOSED IMPROVEMENT

3400 BLOCK E WASHINGTON AVE

SEWER REPLACEMENT

CITY PROJECT NO. 14920
 CONTRACT NO. 9489

PROJECT
 LOCATION



| CONVENTIONAL SIGNS | |
|---|--------|
| FIELD VERIFY ALL UTILITY LOCATIONS | |
| GAS | — G — |
| STORM SEWER | — ST — |
| SANITARY SEWER | — SN — |
| WATER | — W — |
| BURIED ELECTRIC | — E — |
| OVERHEAD ELECTRIC | — OH — |
| POWER POLE | |
| ADA COMPLIANT RAMP W/ DETECTABLE WARNING FIELD | |
| COMBUSTIBLE FLUIDS | |

PUBLIC IMPROVEMENT PROJECT APPROVED

APPROVED DATE

BY THE COMMON COUNCIL OF MADISON, WISCONSIN

PUBLIC IMPROVEMENT DESIGN APPROVED BY:

Jun 27, 2024

City Engineer

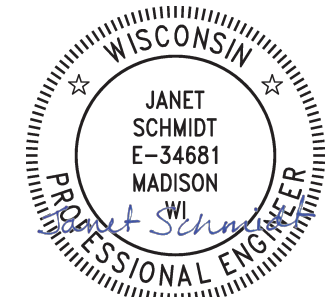
Date

SANITARY SEWER DESIGNED BY:



Jun 27, 2024

STORM SEWER DESIGNED BY:



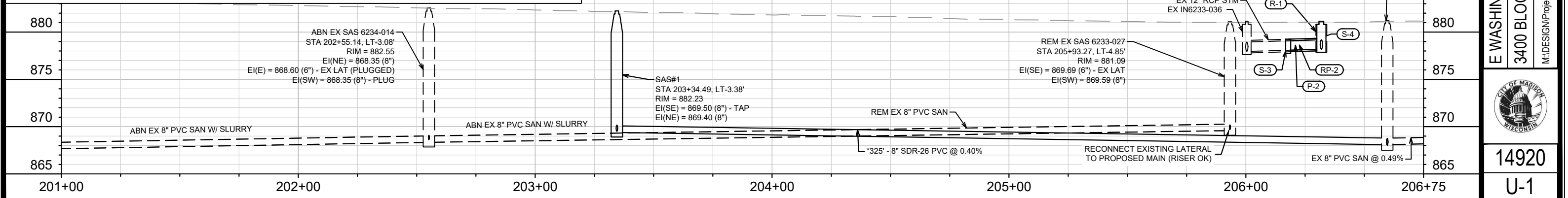
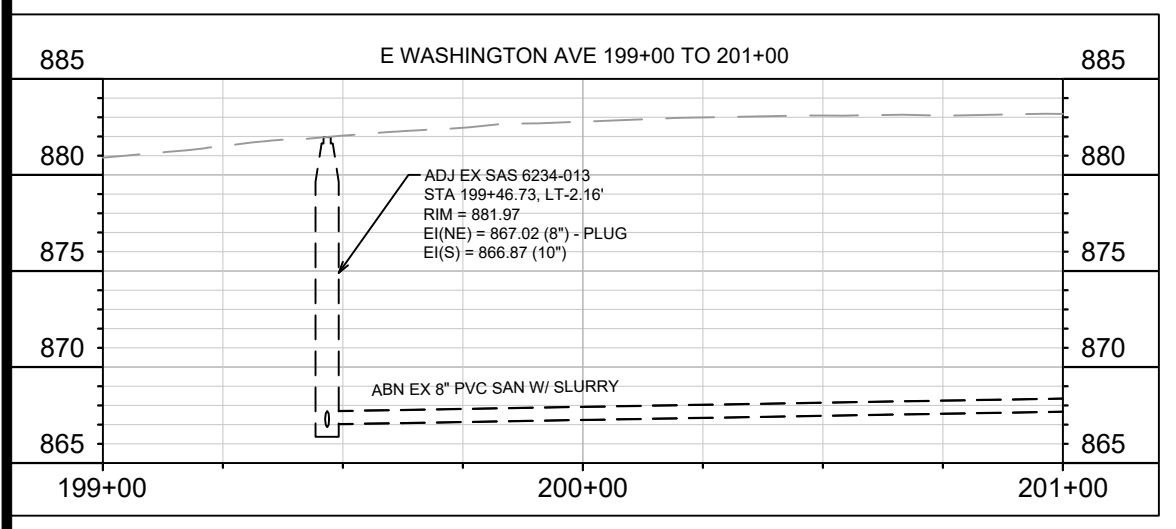
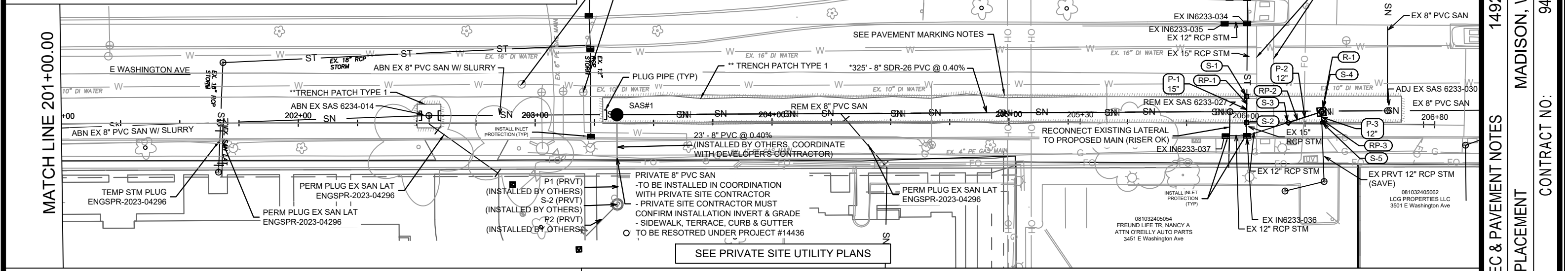
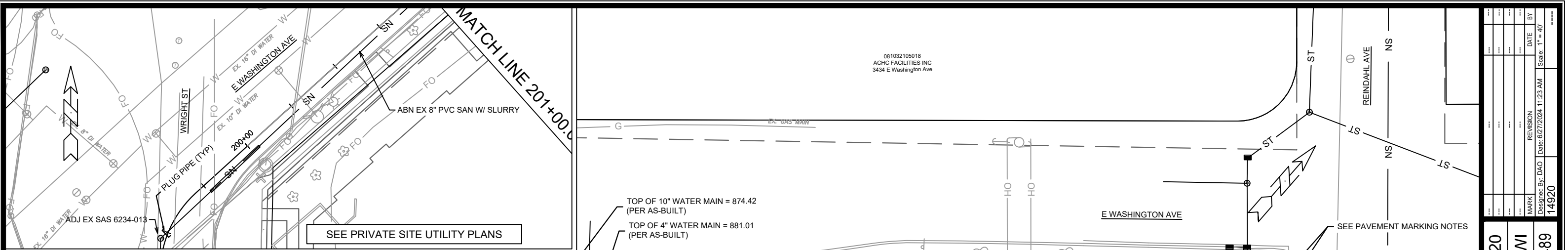
Jun 27, 2024

PLOT SCALE: 1"=0' = 1"=0" XREF

PLOT NAME: ---

REV. DATE: 5/17/2024 2:08 PM

ORIGINATOR: CITY_OF_MADISON



EROSION CONTROL NOTES:
 EROSION CONTROL MEASURES SHALL BE IN PLACE PRIOR TO ANY OTHER CONSTRUCTION ACTIVITY.
 THE CONTRACTOR IS RESPONSIBLE FOR THE CONSTRUCTION AND MAINTENANCE OF ALL EROSION CONTROL MEASURES UNTIL FINAL ACCEPTANCE BY THE CITY OF MADISON.
 THE CONTRACTOR SHALL INSTALL AND MAINTAIN EROSION CONTROL MEASURES IN ACCORDANCE WITH THE WDNR SOC STANDARDS AND CITY OF MADISON STANDARD SPECIFICATIONS.
 THE CONTRACTOR SHALL PROVIDE STREET CLEANING AS NEEDED ON A DAILY BASIS TO KEEP TRACKING TO A MINIMUM.
 RIGID FRAME INLET PROTECTION SHALL BE INSTALLED WITHIN THE CONSTRUCTION LIMITS. ADDITIONAL INLET PROTECTION SHALL BE INSTALLED AS DIRECTED.

PAVEMENT MARKING NOTES:
 REPLACE CROSSWALK PAVEMENT MARKING LINES PER BID ITEM 60814.
 REPLACE GROOVED MARKING LINE WITH WET REFLECTIVE CONTRAST EPOXY, SEE BID ITEM 90001.

* SANITARY SEWER MAIN & LATERALS SHALL CONFORM TO ASTM D3034 SPECS FOR SDR-26
 ** TRENCH PATCH TYPE 1 MAY EXCEED LIMITS SHOWN ON PLAN. DISTURBED CONCRETE PAVEMENT SHALL BE REPLACED TO NEAREST EXISTING JOINT AND SHALL BE INCLUDED IN THE TRENCH FOOT MEASUREMENT FOR THIS ITEM.

081032105018
 ACHC FACILITIES INC
 3434 E Washington Ave

081032405054
 FREUND LIFE TR, NANCY A
 ATTN O'REILLY AUTO PARTS
 3451 E Washington Ave

081032405062
 LCG PROPERTIES LLC
 3501 E Washington Ave

| | |
|-------------|------------|
| DATE | 11/23/2024 |
| BY | |
| REVISION | |
| MARK | |
| DESIGNED BY | DAO |
| DATE | 6/27/2024 |
| SCALE | 1" = 40' |
| PROJECT NO. | 14920 |

14920
 MADISON, WI
 CONTRACT NO.: 9489

E WASHINGTON AVE - SEWER PLAN & PROFILE, EC & PAVEMENT NOTES
 3400 BLOCK EAST WASHINGTON AVE SEWER REPLACEMENT
 M:\DESIGN\Projects\14920\CAD\Sewers\14920SWR-PfP.dwg



14920
 U-1

SEWER SCHEDULE

| | | |
|--------------------------|-----------------|-----------|
| 3401 E WASHINGTON AVENUE | | SHEET NO. |
| PROJECT NO. 14920 | | U-2 |
| SEWER SCHEDULE | | |
| E WASHINGTON AVE | CITY OF MADISON | |

U-2

PROPOSED SANITARY STRUCTURES

| SAS NO. | STATION | LOC (OFFSET) | TOC | E.I. | DEPTH (FT) | NOTES |
|-------------------------|-----------|--------------|--------|--------|------------|-------|
| E WASHINGTON AVE | | | | | | |
| SAS#1 | 203+34.49 | LT-3.38 | 882.23 | 869.40 | 12.83 | [1] |

SANITARY STRUCTURE REMOVALS

| STRUC ID NO. | STATION | LOC (OFFSET) | TOC | E.I. | DEPTH(FT) | NOTES |
|-------------------------|-----------|--------------|--------|--------|-----------|-------|
| E WASHINGTON AVE | | | | | | |
| SAS 6233-027 | 205+93.27 | LT-4.85 | 881.09 | 869.59 | 11.50 | [2] |

SANITARY STRUCTURE ABANDONMENTS

| STRUC ID NO. | STATION | LOC (OFFSET) | TOC | E.I. | DEPTH(FT) | NOTES |
|-------------------------|-----------|--------------|--------|--------|-----------|-------|
| E WASHINGTON AVE | | | | | | |
| SAS 6234-014 | 202+55.14 | LT-3.08 | 882.55 | 868.35 | 14.20 | |

SANITARY STRUCTURE ADJUSTMENTS

| STRUC ID NO. | STATION | LOC (OFFSET) | TOC | PROP TOC | RIM ADJ (FT) | NOTES |
|-------------------------|-----------|--------------|--------|----------|--------------|-------|
| E WASHINGTON AVE | | | | | | |
| SAS 6233-030 | 206+59.68 | LT-5.74 | 881.21 | 881.21 | 0.00 | [3] |
| SAS 6234-013 | 199+46.73 | LT-2.16 | 881.97 | 881.97 | 0.00 | [4] |

PROPOSED STORM STRUCTURES

| STRUC. NO. | STATION | LOC (OFFSET) | TYPE | TOC | E.I. | DEPTH (FT) | NOTES |
|-------------------------|-----------|--------------|---------------|--------|--------|------------|------------------------|
| E WASHINGTON AVE | | | | | | | |
| S-1 | 206+00.32 | LT-11.38 | 15" COLLAR | - | 877.73 | - | |
| S-2 | 206+00.32 | LT-0.30 | 15" COLLAR | - | 877.87 | - | |
| S-3 | 206+17.87 | LT-0.40 | 12" COLLAR | - | 878.09 | - | |
| S-4 | 206+31.87 | LT-5.10 | 3X3 STORM SAS | 881.14 | 878.19 | 2.95 | FP; W/R-1050-1550-0054 |
| S-5 | 206+32.07 | LT-0.58 | 12" COLLAR | - | 878.31 | - | |

SPECIFIC NOTES:

- [1] PRIVATE MAIN WILL BE EXTENDED FROM PROPERTY LINE. DEVELOPER MUST PROVIDE SURVEY FOR PRIVATE SAS S7. SEE SHEETS C501-C503 ON PRIVATE SITE PLANS.
- [2] EX PRIVATE LATERAL FOR 3451 E WASHINGTON AVE SHALL BE CONNECTED TO PROPOSED MAIN. INSTALLING A RISER IS OK.
- [3] TAP EXISTING SAN SAS, EI(SW) = 868.11 (8"); RECONSTRUCT BENCH & FLOWLINE
- [4] PLUG EX 8"(NE)

STANDARD NOTES:

- PLAN LENGTH (PAY LENGTH) IS FROM CENTER OF STRUCTURE TO CENTER OF STRUCTURE. PIPE LENGTH IS ACTUAL LENGTH OF PIPE FROM STRUCTURE WALL TO STRUCTURE WALL. SLOPE CALCULATED USING PIPE LENGTH.
- ALL FIELD POURED SAS STORM STRUCTURES SHALL BE CONSTRUCTED IN ACCORDANCE WITH STANDARD DETAIL DRAWING 5.7.3. ALL PRECAST SAS STORM STRUCTURES SHALL BE CONSTRUCTED IN ACCORDANCE WITH STANDARD DETAIL DRAWING 5.7.5.
- ALL REBAR FOR FIELD POURED STRUCTURES SHALL BE EPOXY COATED. ANY EXPOSED STEEL SHALL BE TOUCHED UP OR RECOATED PRIOR TO USE.
- APPROXIMATE DISCHARGE E.I. GIVEN, ADJUST E.I. AND PIPE SLOPE IN THE FIELD.
- TOP OF CASTING GRADE GIVEN IS THE TOP OF CURB FOR INLET STRUCTURES AND THE FLOWLINE OF THE CLOSED CASTING FOR SAS's.
- ABBREVIATIONS: AE = APRON ENDWALL; RCP = REINFORCED CONCRETE PIPE; HERCP = HORIZONTAL ELLIPTICAL REINFORCED CONCRETE PIPE; DNA = DOES NOT APPLY; SAS = SEWER ACCESS STRUCTURE; LP = LOW POINT INLET STRUCTURE; FP = FIELD POURED STRUCTURE; TR = TOP OF CONCRETE ROOF; NCM = NO CROWN MATCH FOR PIPES; UD = UNDERDRAIN
- ALL REINFORCED CONCRETE PIPES TO BE CLASS 3 UNLESS OTHERWISE NOTED.
- SURVEYOR TO CONFIRM THAT ALL INLET STATION / OFFSETS LINE UP WITH PROPOSED CURB AND GUTTER.
- ALL STRUCTURES CALLED OUT AS FIELD POURED SHALL BE FIELD POURED. ALL OTHER STRUCTURES (NOT INDICATED AS FIELD POURED) SHALL BE SUBMITTED TO CITY ENGINEERING FOR APPROVAL IF PRECAST STRUCTURES ARE PREFERRED. CONTACT DANIEL OLIVARES OF CITY ENGINEERING AT (608) 261-9285 FOR PRECAST APPROVALS OR EMAIL SHOP DRAWINGS TO DAOLIVARES@CITYOFMADISON.COM.

PROPOSED SANITARY PIPES

| FROM (DNSTM) | TO (UPSTM) | DNSTM E.I. | UPSTM E.I. | PLAN LGTH (FT) | SLOPE (%) | PIPE SIZE | PVC TYPE | NOTES |
|-------------------------|------------|------------|------------|----------------|-----------|-----------|----------|--------|
| E WASHINGTON AVE | | | | | | | | |
| SAS 6233-030 | SAS#1 | 868.11 | 869.40 | 325 | 0.40% | 8" | SDR-26 | [2][3] |

SANITARY PIPE REMOVALS & ABANDONMENTS

| REMOVE FROM | REMOVE TO | LGTH (FT) | PAID (Y/N) | PAID REM (FT) | ABN LGTH (FT) | CY SLURRY | PIPE SIZE | PIPE TYPE | NOTES |
|-------------------------|--------------|-----------|------------|---------------|---------------|-----------|-----------|-----------|-------|
| E WASHINGTON AVE | | | | | | | | | |
| SAS 6234-013 | SAS 6231-014 | 309 | Y | 0 | 309 | 4.0 | 8" | PVC | |
| SAS 6231-014 | SAS#1 | 79 | Y | 0 | 79 | 1.0 | 8" | PVC | |
| SAS#1 | SAS 6233-027 | 259 | N | 0 | 0 | 0.0 | 8" | PVC | |

STORM STRUCTURE REMOVALS & ABANDONMENTS

| STRUC. NO. | ID NO. | STATION | LOC (OFF) | TYPE | DEPTH (FT) | NOTES |
|-------------------------|------------|-----------|-----------|---------|------------|-------|
| E WASHINGTON AVE | | | | | | |
| R-1 | AS6233-038 | 206+31.87 | LT-5.10 | 4X4 SAS | 2.95 | |

STORM PIPE REMOVALS & ABANDONMENTS

| PIPE REM NO. | REMOVE FROM | REMOVE TO | LGTH (FT) | PAID (Y/N) | REM LGTH PAID (FT) | ABN LGTH (FT) | SLURRY (CY) | PIPE SIZE | PIPE TYPE | NOTES |
|-------------------------|-------------|-----------|-----------|------------|--------------------|---------------|-------------|-----------|-----------|-------|
| E WASHINGTON AVE | | | | | | | | | | |
| RP-1 | S-1 | S-2 | 11 | N | 0 | 0 | 0.0 | 15" | RCP | |
| RP-2 | S-3 | R-1 | 15 | N | 0 | 0 | 0.0 | 12" | RCP | |
| RP-3 | R-1 | S-5 | 5 | N | 0 | 0 | 0.0 | 12" | RCP | |

PROPOSED STORM PIPES

| PIPE NO. | FROM (DNSTM) | TO (UPSTM) | DISCH. E.I. | INLET E.I. | PLAN (PAY) LGTH (FT) | PIPE LGTH (FT) | SLOPE (%) | PIPE SIZE | TYPE | NOTES |
|-------------------------|--------------|------------|-------------|------------|----------------------|----------------|-----------|-----------|------|-------|
| E WASHINGTON AVE | | | | | | | | | | |
| P-1 | S-1 | S-2 | 877.73 | 877.87 | 11 | 10 | 1.43% | 15" | RCP | |
| P-2 | S-3 | S-4 | 878.09 | 878.19 | 15 | 13 | 0.78% | 12" | RCP | |
| P-3 | S-4 | S-5 | 878.19 | 878.31 | 5 | 3 | 4.55% | 12" | RCP | |